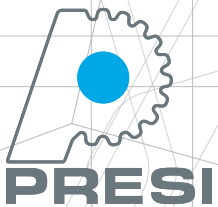


# MINITECH

250 SP1 | 250 DP1 | 250 DP2  
300 SP1 | 300 DP1 | 300 DP2



01101010000010101010  
10101000111010100001  
11001010111010001101  
01000110101010010101  
10101010101010101000  
011000011110101010



 POLISHING

MINITECH  
250 SP1 | 250 DP1  
250 DP2 | 300 SP1  
300 DP1 | 300 DP2

# MINITECH

## THE MANUAL POLISHING MACHINE RANGE BY PRESI

User-friendly, reliable and robust, the new MINITECH range of manual polishing machines provides a simple answer to all polishing needs. The machines are equipped with platens from Ø200 to 300 mm and have a motor power from 750W to 1500W.

-  **POWERFUL**
-  **ROBUST**
-  **ERGONOMIC**

### Easy maintenance

- Removable over-bowl easy to clean.
- The tank incorporates an anti-splash device that prevents any projection.



### Large color touchscreen

- 7" TFT LCD color display, 16/9
- Ergonomic and intuitive user interface
- Many features :
  - Speed and direction of rotation
  - Sprinkling
  - Duration of the step (counting and countdown of time)



- ① Time and speed with programmable shortcuts
- ② A gauge displays in real time the pressure applied on the platen
- ③ Memorization of 3 polishing programs
- ④ Drying of the platen

### Watering ramp

The multi-jet ramp with adjustable flow cools the platen evenly

### Polishing platen

- Ø 200 to 300 mm
- Allows all types of polishing clothes

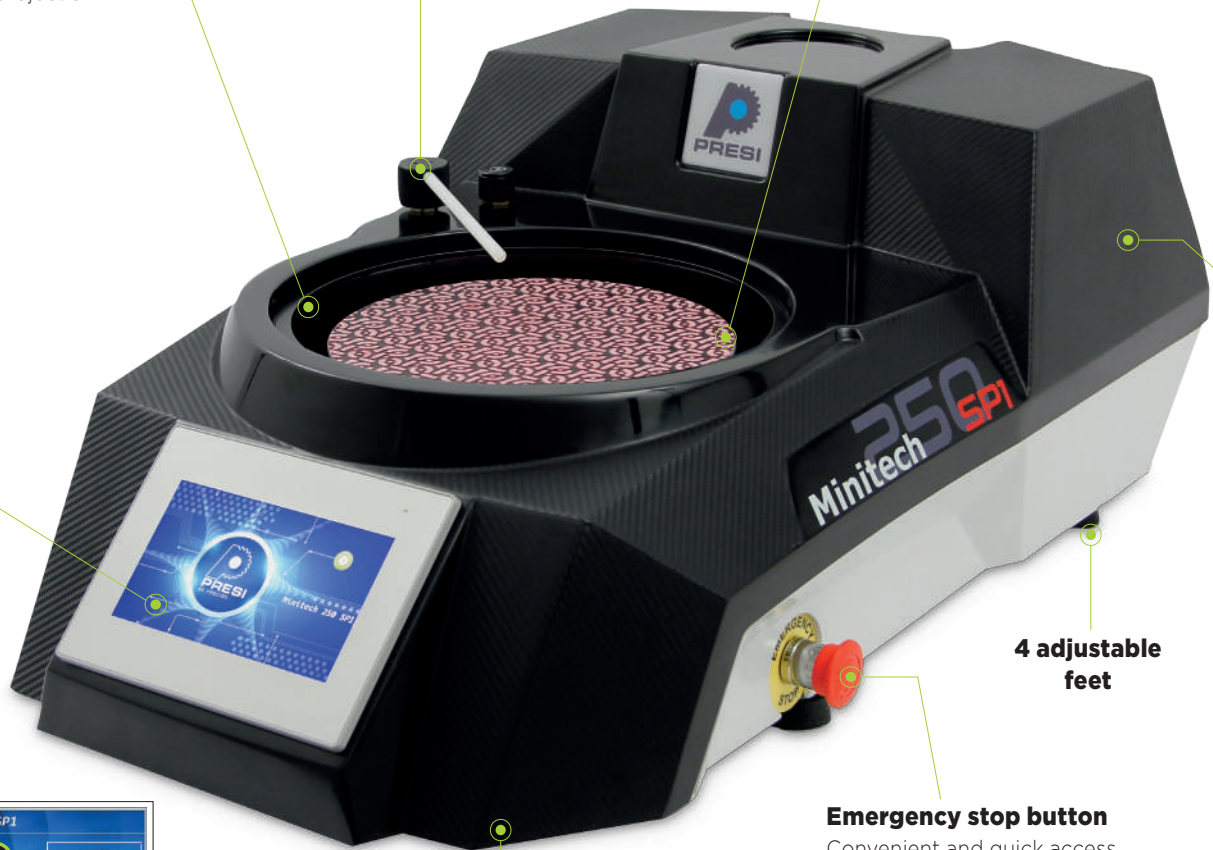
### 4 adjustable feet

### Emergency stop button

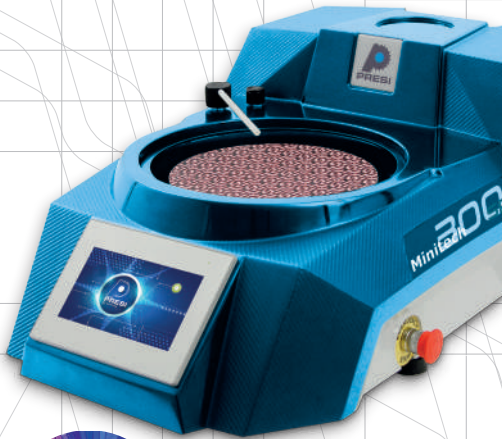
Convenient and quick access to immediately stop its operation.

### Durability

The body and the composite tank exclude any oxidation. It allows a better shock resistance



**IMAGINE YOUR  
MACHINE TAILOR-MADE**  
WITH THE COLOR OF YOUR CHOICE !



Opt for a colour of the hood in the RAL color of your choice

#### Motor with frequency inverter

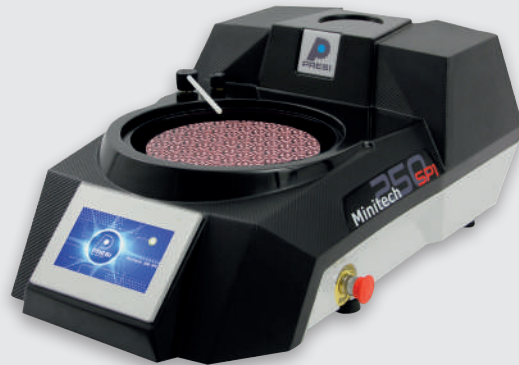
- Constant torque and speed whatever the applied load
- Precise speed variation from 20 to 700 RPM
- Gives exceptional power to the platen
- 2 directions of rotation

## ROBUSTNESS AND CHARACTER

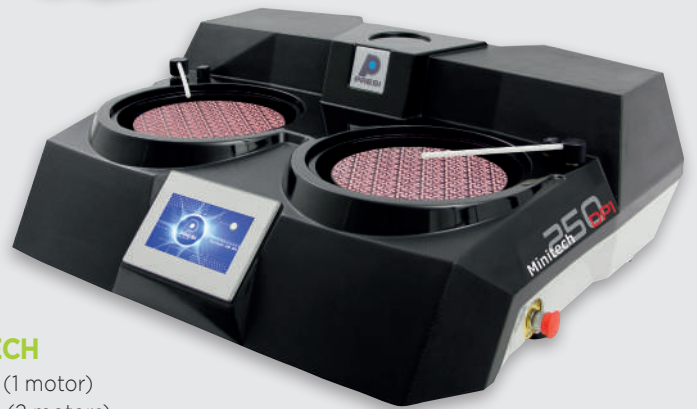
With its affirmed style and edged lines, this new range is distinguished by its design with an easily recognizable sleek and refined carbon look.

## MINITECH RANGE

PLATEN DIAMETERS : 200 to 250 mm

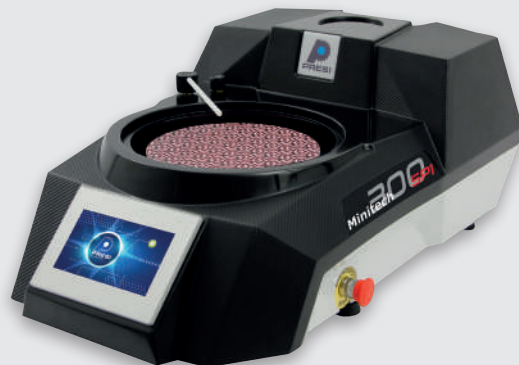


**MINITECH**  
250 SP1

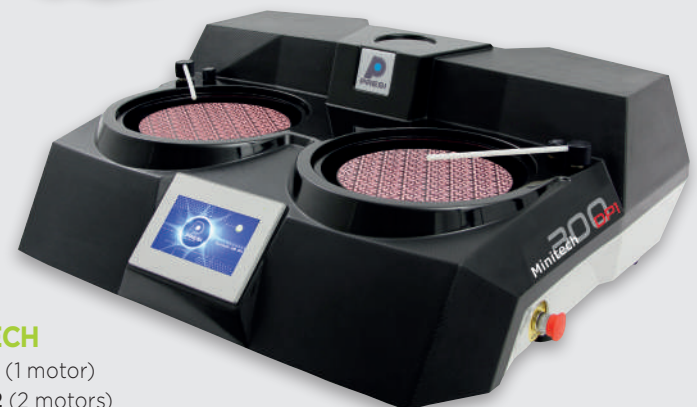


**MINITECH**  
250 DP1 (1 motor)  
250 DP2 (2 motors)

PLATEN DIAMETERS : 250 to 300 mm



**MINITECH**  
300 SP1



**MINITECH**  
300 DP1 (1 motor)  
300 DP2 (2 motors)

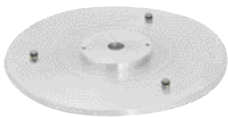
## TECHNICAL FEATURES



	250 SP1	250 DP1	250 DP2	300 SP1	300 DP1	300 DP2
Reference	Ref. 66400	Ref. 66410	Ref. 66420	Ref. 66430	Ref. 66440	Ref. 66450
Number of platen	1	2	2	1	2	2
Number of motors	1	1	2	1	1	2
Diameter of the polishing platen	200 to 250 mm	200 to 250 mm	200 to 250 mm	250 to 300 mm	250 to 300 mm	250 to 300 mm
Rotation speed (in increment of 1RPM)	20 to 700 RPM	20 to 700 RPM	20 to 700 RPM	20 to 700 RPM	20 to 700 RPM	20 to 700 RPM
Rotation direction : clockwise & counter-clockwise	✓	✓	✓	✓	✓	✓
Timer	✓	✓	✓	✓	✓	✓
Speed display	✓	✓	✓	✓	✓	✓
Time display in seconds	✓	✓	✓	✓	✓	✓
Display of applied force	✓	✓	✓	✓	✓	✓
Memorizing settings	✓	✓	✓	✓	✓	✓
Watering by multijet ramp	✓	✓	✓	✓	✓	✓
Nominal power S1	750 W	750 W	750 W	900 W	900 W	900 W
Nominal power S3	1100 W	1100 W	1100 W	1500 W	1500 W	1500 W
600 RPM spin function	✓	✓	✓	✓	✓	✓
High engine torque	✓	✓	✓	✓	✓	✓
Constant speed of the platen	✓	✓	✓	✓	✓	✓
Immediate stop of the platen	✓	✓	✓	✓	✓	✓
Bearing transmission	✓	✓	✓	✓	✓	✓
Over-bowl	✓	✓	✓	✓	✓	✓
Progressive acceleration of the platen	✓	✓	✓	✓	✓	✓
Splash guard	✓	✓	✓	✓	✓	✓
Power supply*	230 VAC	230 VAC	230 VAC	230 VAC	230 VAC	230 VAC
Frequency	50 - 60 Hz	50 - 60 Hz	50 - 60 Hz	50 - 60 Hz	50 - 60 Hz	50 - 60 Hz
Max. current	8 A	8 A	8 A	8 A	8 A	8 A
Water inlet	Ø 12 mm	Ø 12 mm	Ø 12 mm	Ø 12 mm	Ø 12 mm	Ø 12 mm
Water outlet	Ø 32 mm	Ø 32 mm	Ø 32 mm	Ø 32 mm	Ø 32 mm	Ø 32 mm
Width	510 mm	920 mm	920 mm	620 mm	1100 mm	1100 mm
Height	330 mm	330 mm	330 mm	330 mm	330 mm	330 mm
Depth	810 mm	735 mm	735 mm	875 mm	810 mm	810 mm
Weight	35 kg	50 kg	58 kg	42 kg	60 kg	70 kg

\* possibility 110 VAC : 50 - 60 Hz

## ACCESSORIES (100% COMPATIBLE WITH THE OLDER GENERATION)



**Drive platen with aluminium positioners**  
 Ø 196 mm. Ref. 56350  
 Ø 245 mm. Ref. 67221



**Almagtech platen**  
 Ø 200 mm. Ref. 67822  
 Ø 250 mm. Ref. 67820  
 Ø 300 mm. Ref. 67821



**Circular paper holder (metal)**  
 Ø 200 mm. Ref. 56054  
 Ø 250 mm. Ref. 56055



**Circular paper holder (PVC)**  
 Ø 200 mm. Ref. 56067  
 Ø 250 mm. Ref. 56068  
 Ø 300 mm. Ref. 56069



**PVC platen with cone housing**  
 Ø 230 mm. Ref. 56066  
 Ø 250 mm. Ref. 56062  
 Ø 300 mm. Ref. 57163



**Full PVC platen with machined cone**  
 Ø 200 mm. Ref. 56053  
 Ø 250 mm. Ref. 56063  
 Ø 300 mm. Ref. 56064



**PVC lid**  
 Ø 250 mm. Ref. 66050  
 Ø 300 mm. Ref. 66025



**Grinding recirculation tank with 5µ filter (capacity : 55L)**  
 Ref. 67130

